

Introducing

# KnewSpace

**Ensuring true small group learning  
for every student, every day.**

By Dr. Albert Haven,  
Founder of the Institute for Instructional Management

# Contents

- 1 What is KnewSpace?
- 2 How It Came To Be
- 3 What's Driving It
- 4 How It Works
- 5 A Pilot: Las Palmas School
- 6 Get Involved
- 7 Appendix

# What is KnewSpace?

---

# KnewSpace began with a simple question:

How can we take the resources of education

- **staff**
- **students**
- **stuff**
- **space**
- **schedule**

and reorganize them to improve teaching and learning?

# **KnewSpace reorganizes the resources of education.**

Staff, students, stuff, space, and schedule are reorganized to deliver more targeted instruction to students.

The promise of the program is to have every student spend at least 20 to 60% of the school day in small, targeted group learning in every subject. In small group instruction, students show more improvement more quickly.

In small groups, teachers can more closely observe students and deliver instruction to “meet them where they are.”

# **KnewSpace doesn't require additional resources.**

It doesn't change the curriculum or the length of the school day.

It can be deployed at virtually no additional cost.  
And it's easy to implement.

**We are piloting the program at several schools today, and showing early positive results.**



**“It’s a grouping system that allows teachers to have targeted instruction—students move in and out of small groups so that they get what they need.”**

—

Tricia Naval

2nd grade teacher, Las Palmas School

# How It Came To Be

---

# KnewSpace comes out of the experiences and thinking of life-long educator Dr. Albert Haven.



# **To create KnewSpace, Dr. Haven applied systems thinking to education reform.**

Dr. Haven worked as a teacher and administrator in many school districts.

As he moved from teaching to administration, and began to manage, he recognized that schools are organic and everything is connected.

He saw an opportunity to put together the resources of a school in a new way—to get better results.

He designed KnewSpace to do that.

# What's Driving It

---

**We are preparing our children for the 21st century in classrooms designed in the 19th century—with terrible results.**

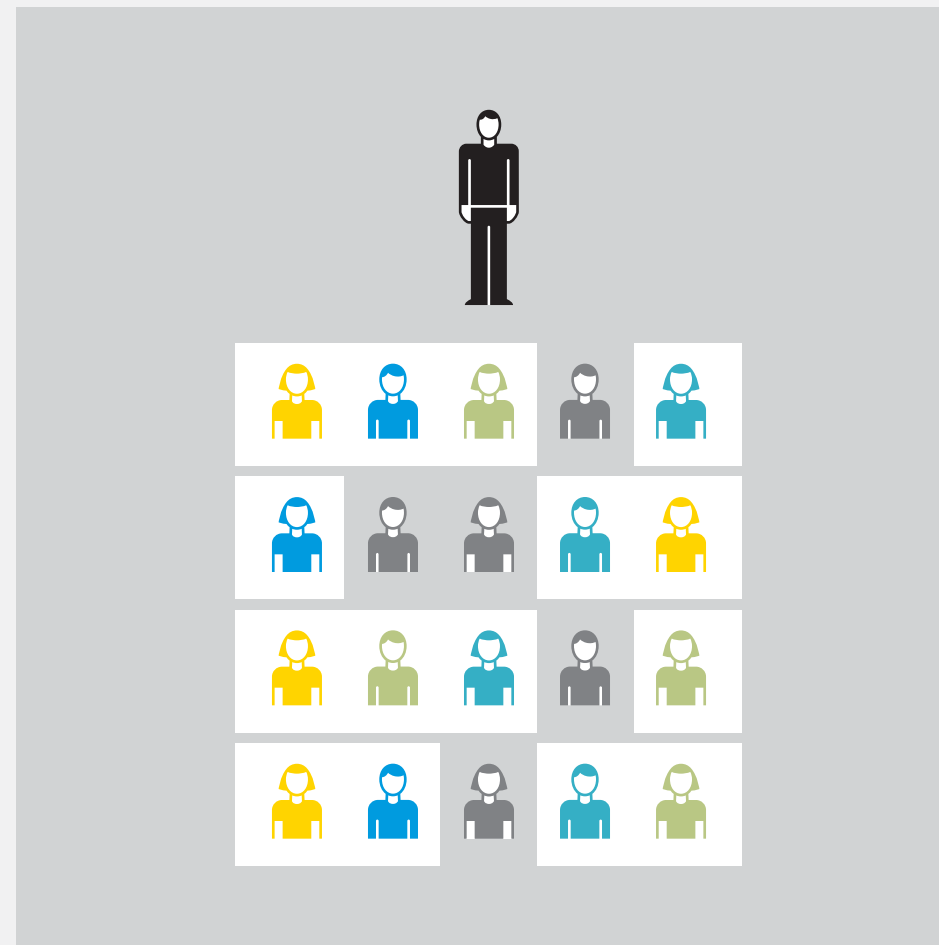
We continue to teach with a “one size fits all” approach, with the teacher at the center of the experience. Instead, we need to provide highly personalized instruction, focused on the learner, wherever he or she is.

**We need to rethink  
the classroom.**

# Today, instruction typically involves 1 teacher working with 20 to 30 students.



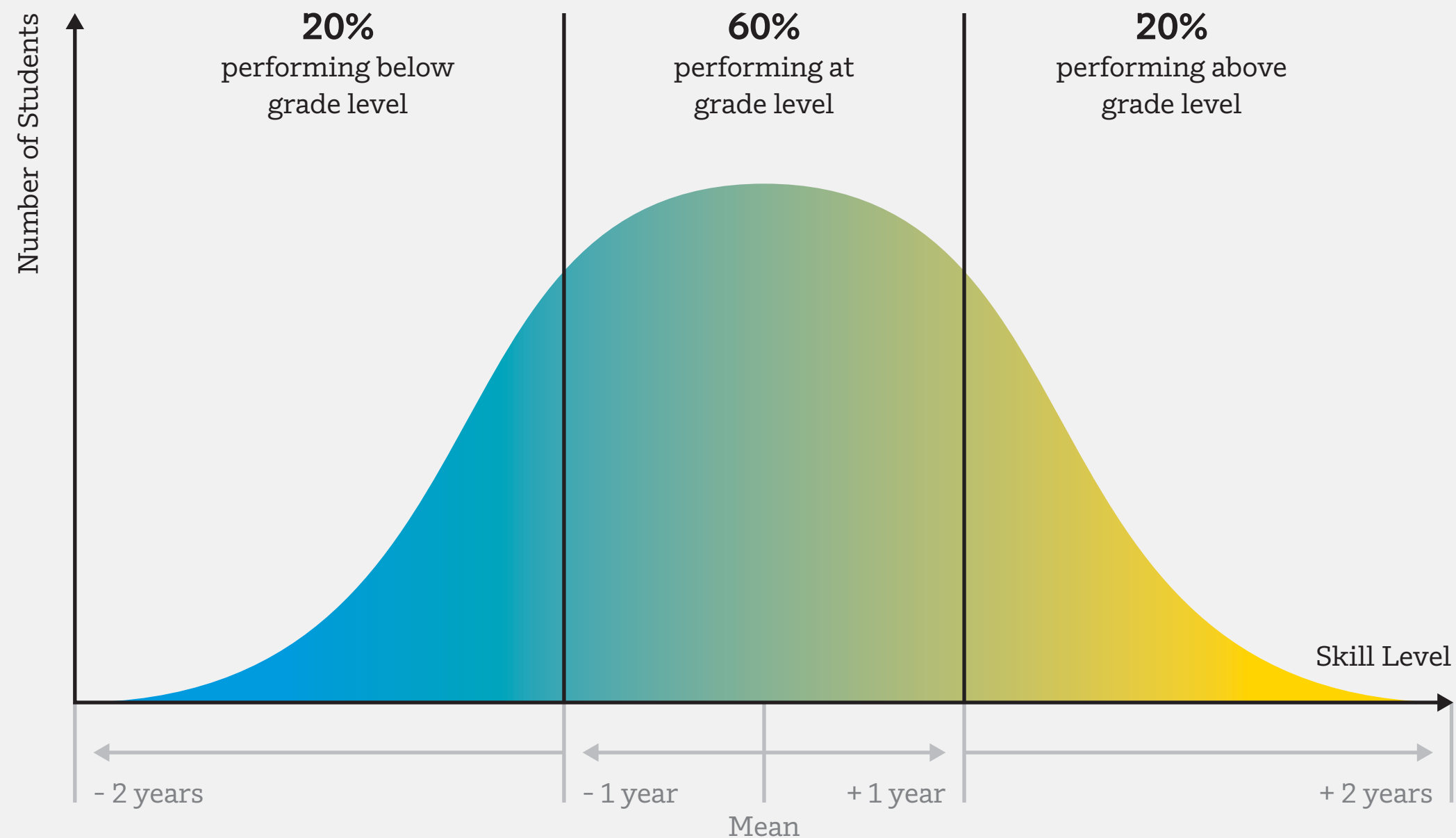
# Some students can be disconnected— not engaged or not paying full attention.



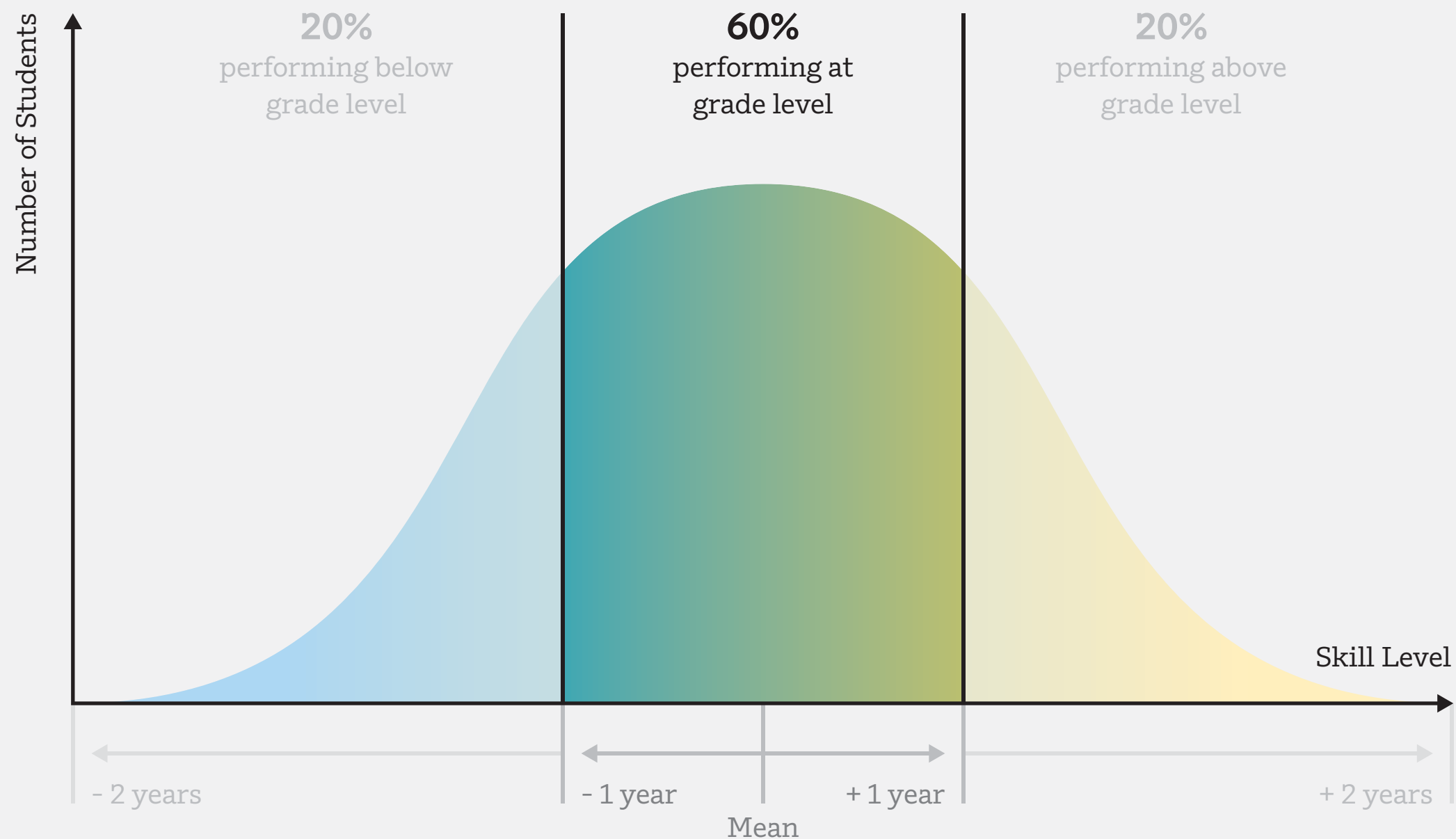
# Students in the class will have different abilities.

In a single class, the range could be up to 6 years.

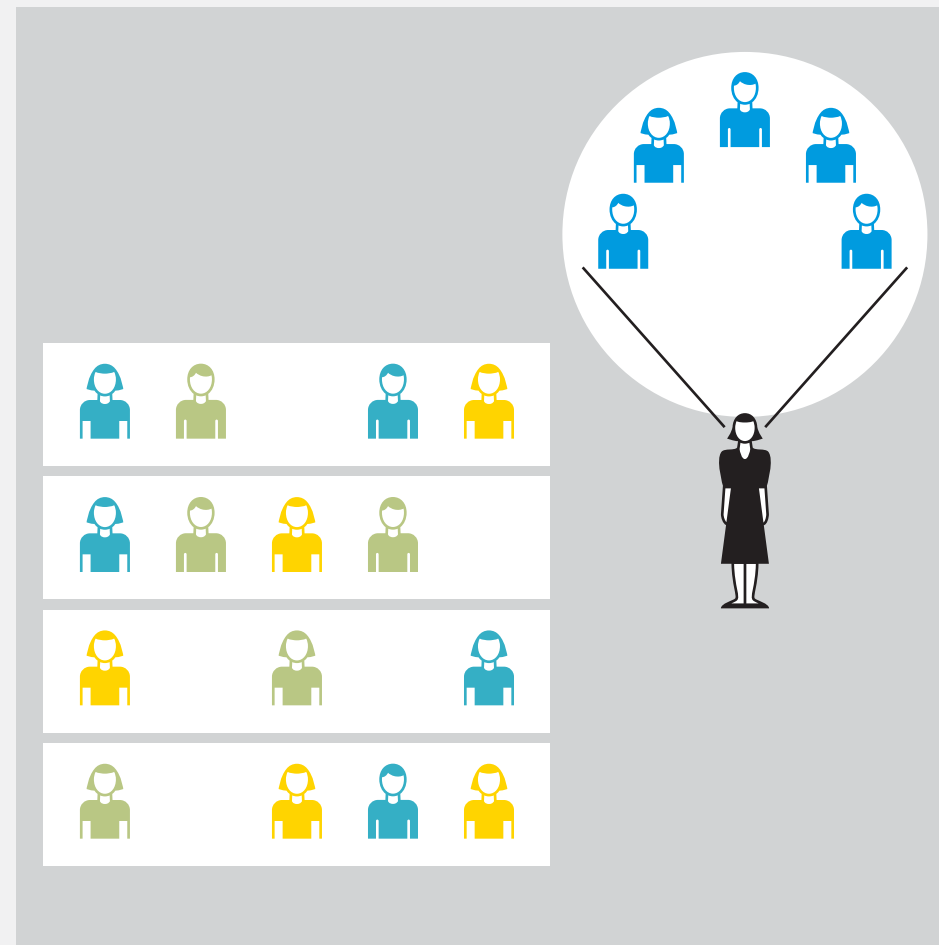
Advanced students can be bored; struggling students often get lost.



# Teachers naturally focus where they can have the most impact—on the majority of students in the middle.

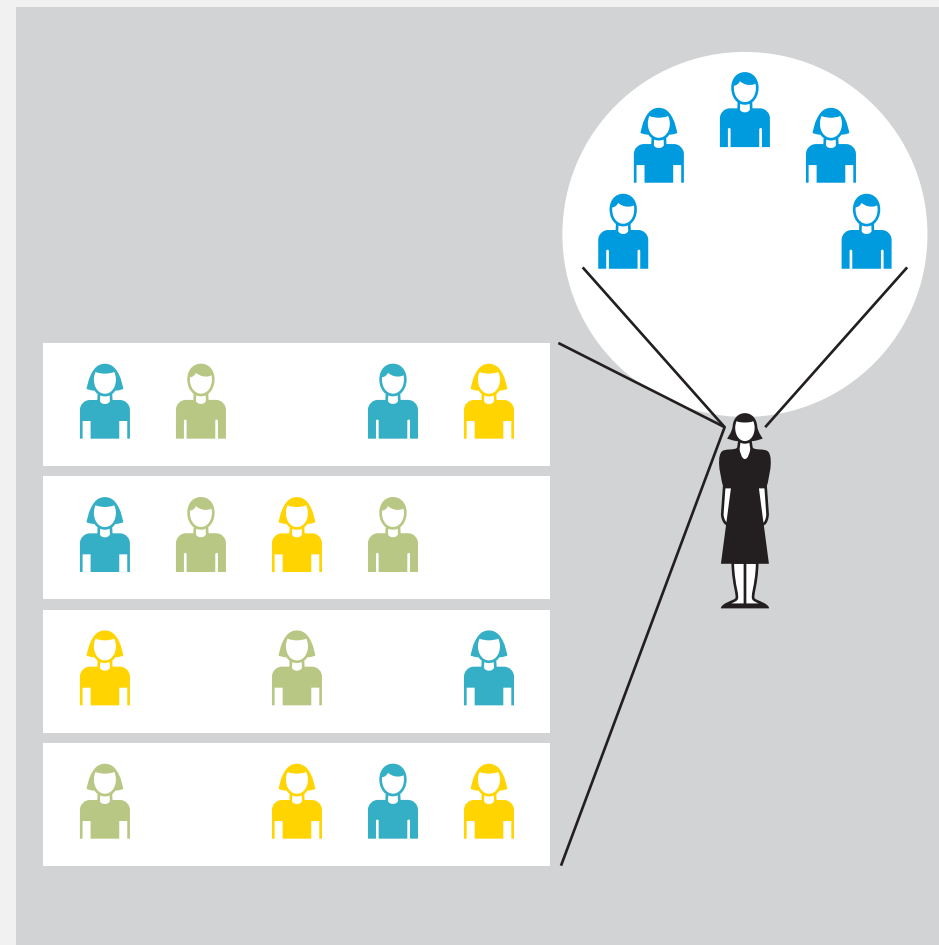


**Teachers can focus on a small group of students.  
But that leaves the majority to work on their own—  
unattended.**



# The teacher needs to keep one eye on the rest of the class, to ensure they stay focused.

This can make it difficult to deliver effective small group instruction.



# **At the same time, students struggle to stay focused in class.**

Research suggests that grade school students can pay attention for 10 minutes at a time.

In a typical school day, many students sit at a single desk for more than 6 hours, switching from one subject to the next.

# **In traditional classrooms, teachers may work in isolation—developing singular teaching methods and tools.**

No matter how talented the teachers are, the result is “inconsistent instruction” in the school as a whole.

The introduction of a new curriculum or standards (e.g., Common Core, No Child Left Behind) is often managed independently—classroom by classroom.

# Teaching resources are also not pooled for efficient use.

Resources are often locked in cupboards and closets where they are “saved for later”—meanwhile, other students could be benefiting from them.

It's also difficult to define spaces within the classroom to support unique activities—like art, science, or project learning.

The KnewSpace program helps address these issues.

# How It Works

---

# **The KnewSpace program turns classrooms into learning spaces.**

The program is not cookie cutter, it provides for a comprehensive instructional cycle that is tailored to student needs.

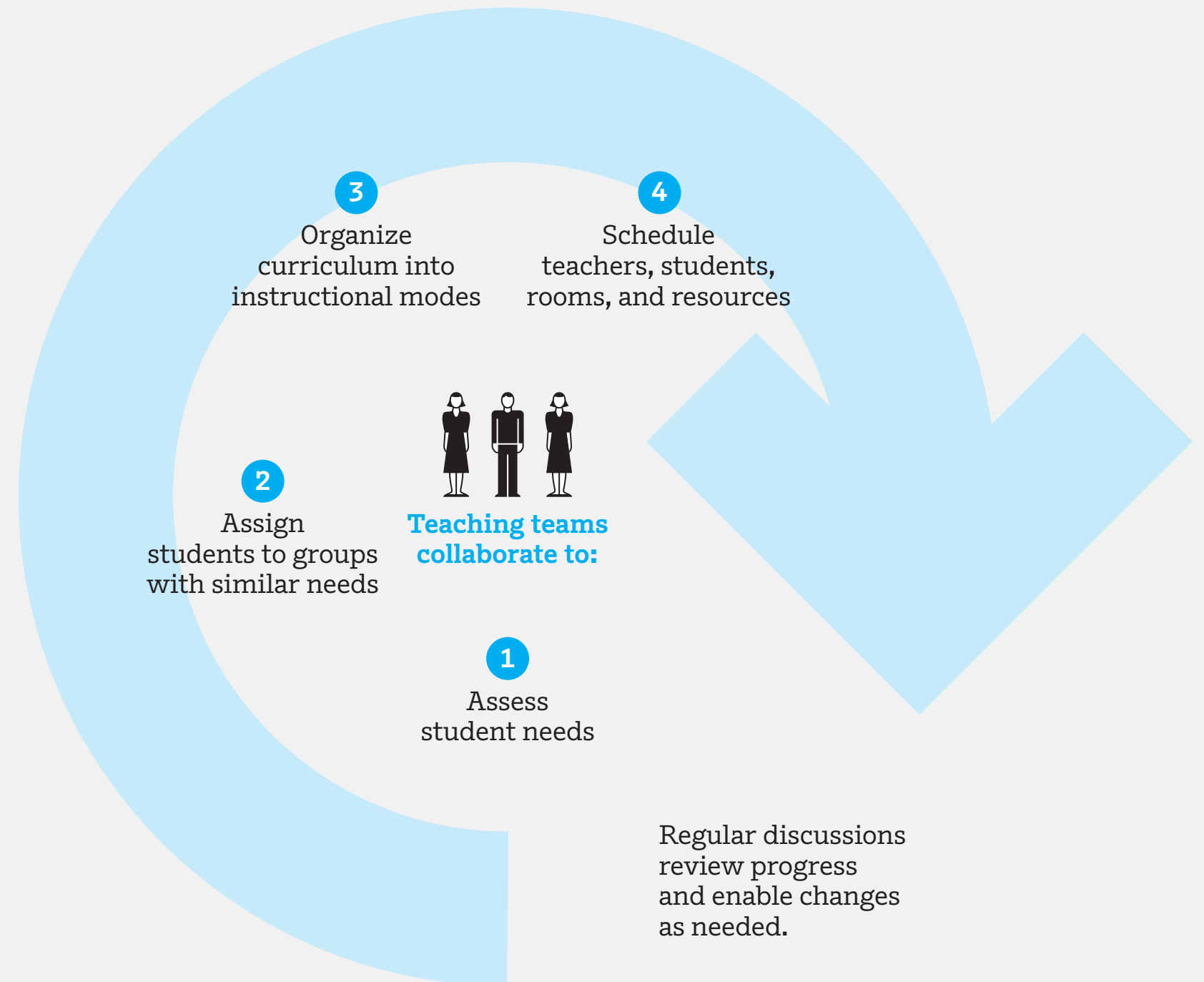
Teachers work together to design the experience that's right for their students.

# The program is surprisingly easy to implement.

Working with KnewSpace staff in a series of workshops, teachers develop the core plan.

Teachers begin to design and implement the program by assessing student needs.

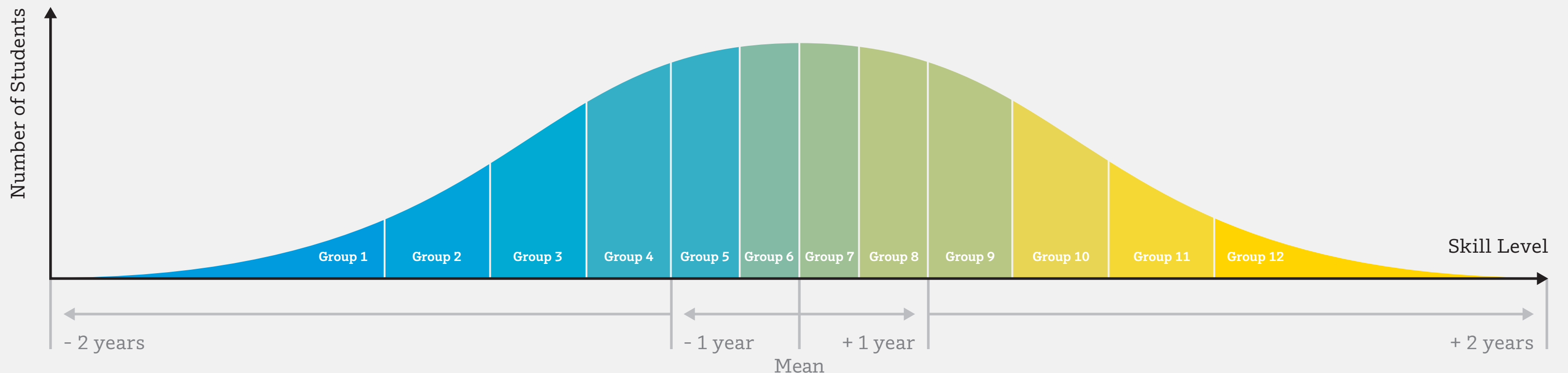
Through regular review and discussion, teachers continually improve the program and methods.



# Teachers organize students into small groups according to their ability, learning style, and special needs.

Classrooms across an entire grade provide a large pool of children, so it's possible to create groups of students with similar abilities.

Students proceed at a pace appropriate for them. Teachers can regroup students as they progress.

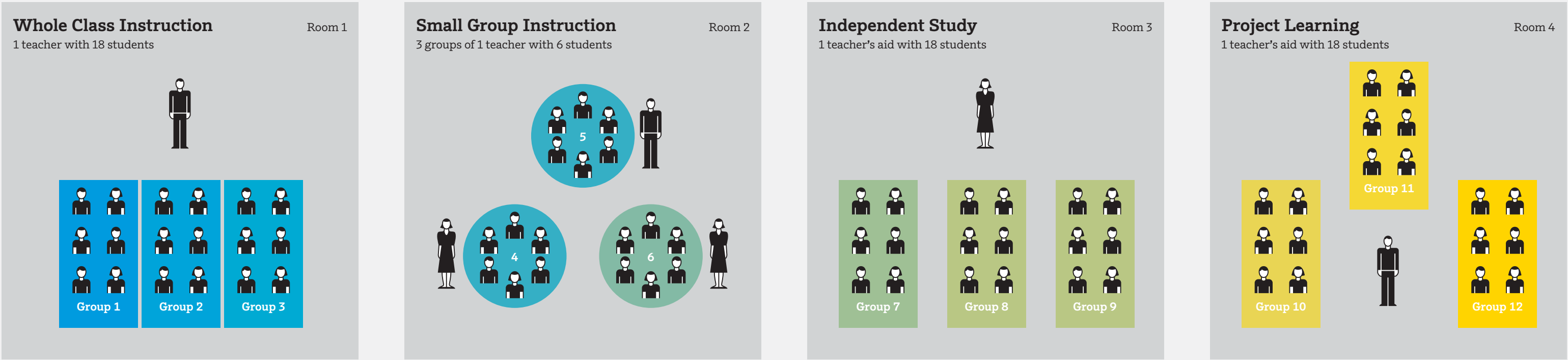


# Teachers organize the curriculum into instruction modes:

- whole class instruction
- small group instruction
- independent study (reinforcement and directed follow up)
- project learning

Teachers may adapt as they go, refining the curriculum as they learn what works best for their students.

# Classrooms are reorganized into learning spaces to support these modes of instruction.









Note: Small group sizes may vary from 6 to 8 students.

# Students rotate every 20 to 30 minutes through instruction modes and learning spaces.

The rotation schedule—designed by the teacher—is key to enabling students to experience more personalized instruction in small groups. The schedule below highlights how groups 1, 2, and 3 move through the KnewSpace program.

The number of learning spaces and rotations depends on grade size.

	Whole Class Instruction Room 1				Small Group Instruction Room 2				Independent Study Room 3				Project Learning Room 4		
8:00 am	1	2	3		4	5	6		7	8	9		10	11	12
8:30 am	10	11	12		1	2	3		4	5	6		7	8	9
9:00 am	7	8	9		10	11	12		1	2	3		4	5	6
9:30 am	4	5	6		7	8	9		10	11	12		1	2	3

Note: Additional rotations may be added to reduce class size.

# Three things happen.

- 1 Teachers teach together.  
They collaborate on the curriculum to make it work,  
and work together to adapt and improve it.
- 2 Students receive more targeted instruction  
in small groups.
- 3 Students benefit from structure, movement,  
and focused periods of instruction  
within a class period.

# A Pilot: Las Palmas School

---

# Las Palmas is a public school in National City, San Diego County, California.



# At Las Palmas, there are 732 students.

Many of the students fit the profile of students in “failing urban inner-city schools.”

97.7% of the students are socioeconomically disadvantaged.  
74.2% are English learners.

In a single classroom, students’ reading ability spans Kindergarten to 4th grade levels.

**In the 2nd grade classes, there are 88 students in 5 rooms.**

Nearly 50% of the children have fallen far enough behind to receive RTI instruction.

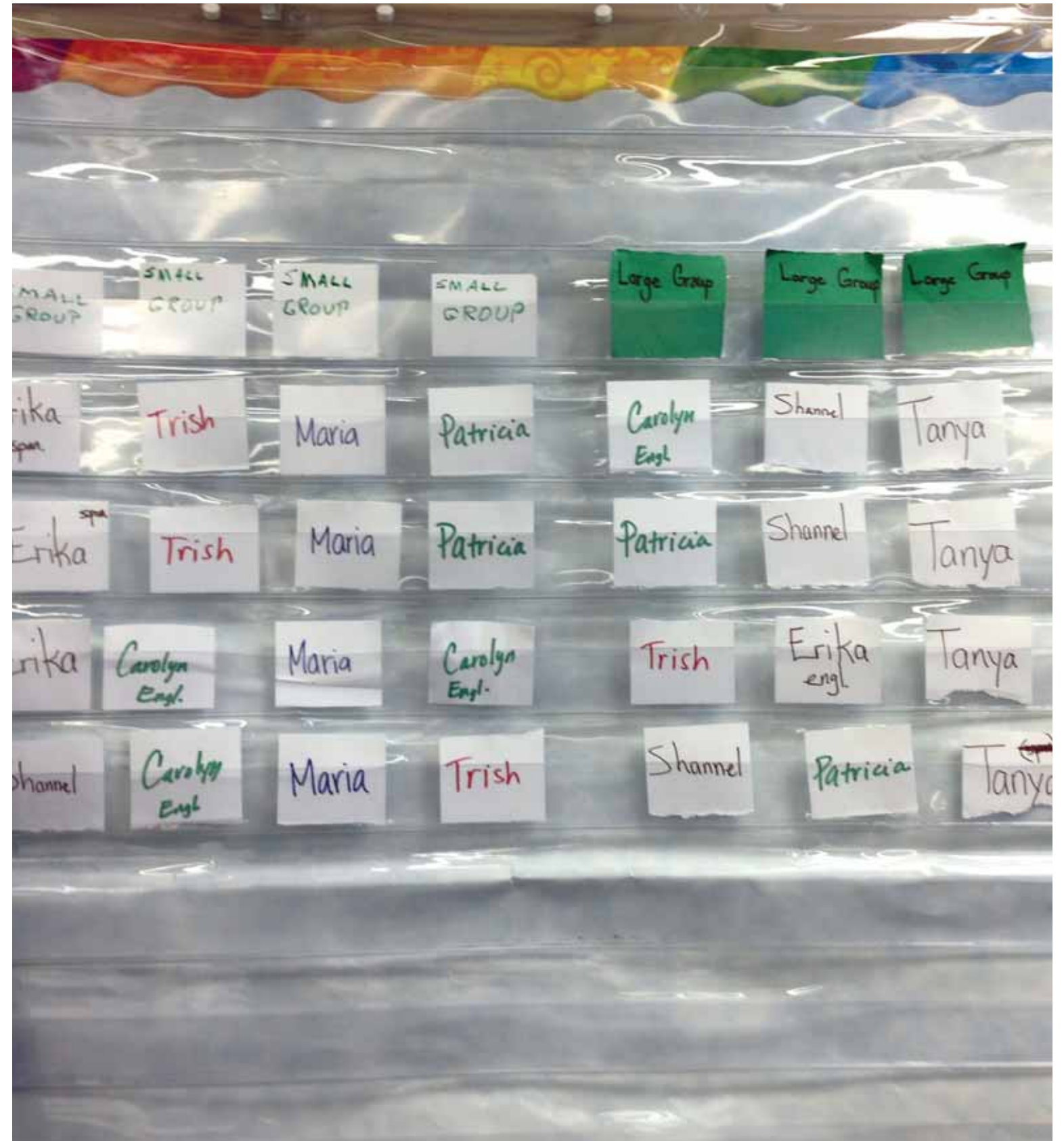


**In a 4-day workshop,  
Dr. Haven introduced KnewSpace  
to the school's principal and his  
2nd grade staff.**

**Here's how it went.**

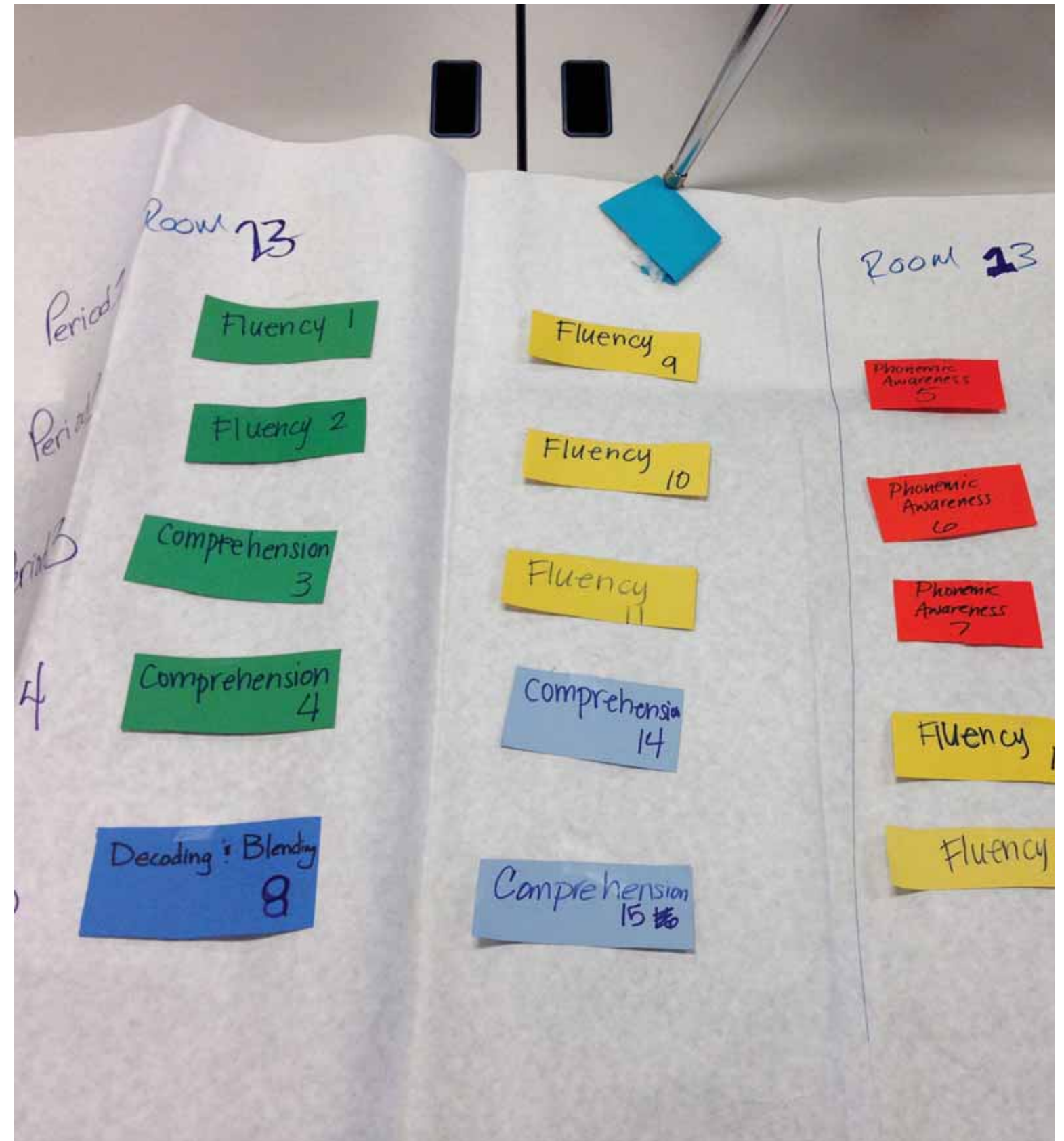
**Four teachers and two reading resource teachers assessed the students and organized them into groups according to reading level, learning style, and need for English instruction.**

Out of their 88 students, they created 15 groups with 5 to 6 students in each group.



**After grouping the students, the teachers created a new schedule and designed new learning spaces.**

Reading class is typically taught in a 2-hour block. The KnewSpace schedule provided for 5 periods of 24 minutes each.



# The schedule is posted in each room.

Every 24 minutes, the children move to a new lesson.

The children switch rooms and move to classrooms set up for whole class, small group, independent study, and project learning.

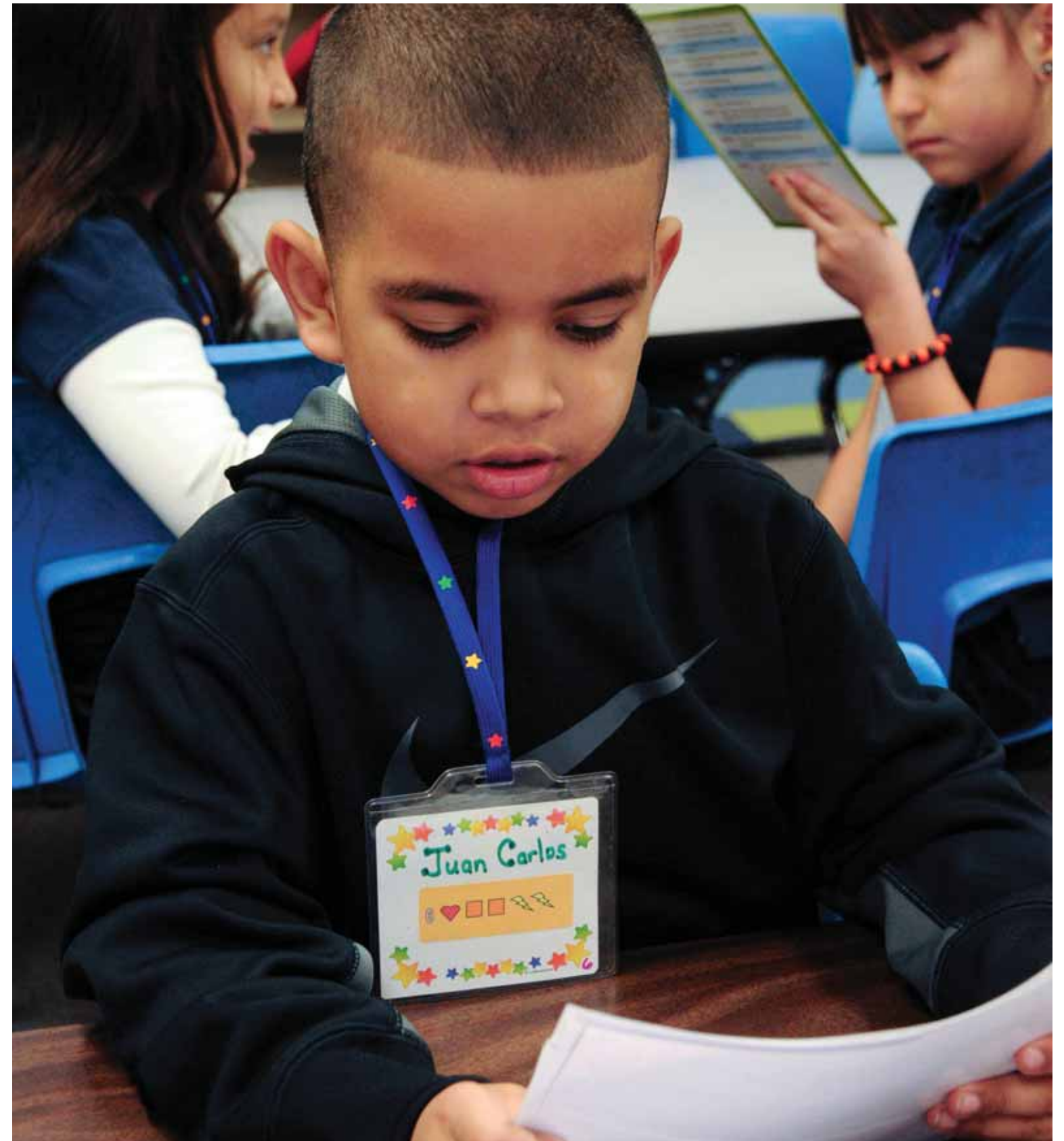
**24 Minute Rotations**

Rotation	Time
First Rotation	8:20 - 8:43
Second Rotation	8:44 - 9:07
Third Rotation	9:08 - 9:31
Fourth Rotation	9:32 - 9:56
Fifth Rotation	10:20 - 10:44

Impactlp@national-k12.ca.us  
dropbox

**Students wear lanyards that tell them what group they are in and where to go next (and help teachers learn their names).**

The schedule looks complicated, but the students have no trouble figuring it out. (This surprised the teachers.)



**The important thing is,  
every child receives uninterrupted  
small group instruction—  
tailored to his or her learning  
needs—every day.**

**In other modes of instruction—whole class, independent study, and project learning—students work on assignments targeted for them.**



**Students spend between 20 to 60% of each day in small groups. Teachers can focus on one small group at a time.**

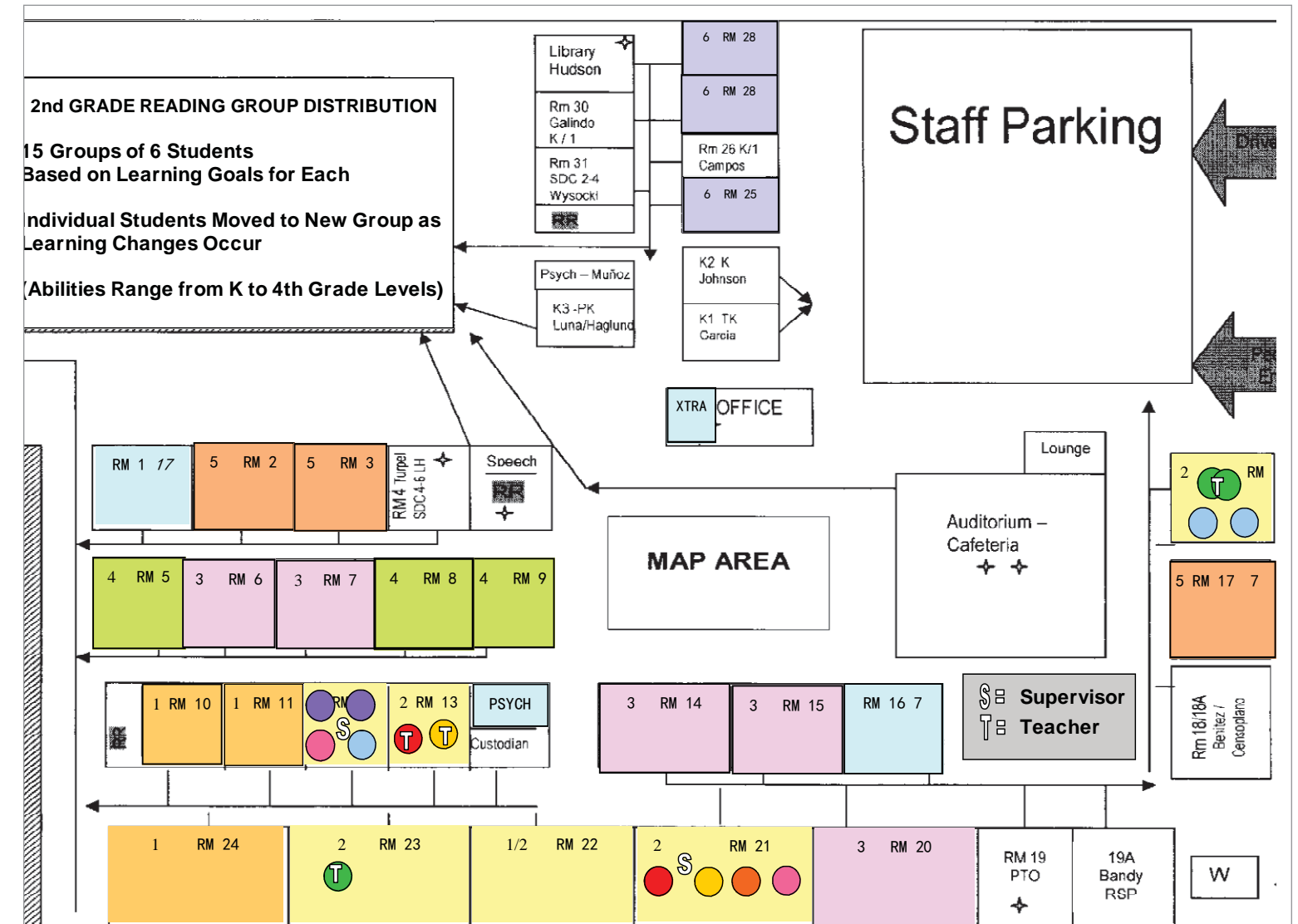


# Classrooms became dedicated learning spaces.

The teachers took the 5 classrooms and created learning spaces:

- 1 room for whole class instruction,
- 2 rooms for small group instruction,
- and 2 rooms for independent study and project learning.

One room remained dedicated to teaching Spanish-speaking students who were learning English.



Here is the floor plan for Las Palmas school. The five 2nd grade classrooms—highlighted yellow—are 4, 12, 13, 21, 22, and 23.

# Teachers worked together to design the instruction.

In KnewSpace, teachers can specialize according to interests and ability.

One teacher can focus on large group instruction.

The other teachers are able to work more closely with small groups of students.



# The program requires no additional staff.

The new learning spaces are manned by existing staff:

- 4 regular teachers
- 1 teacher who specializes in ESL
- and 2 reading resource teachers.

After the introduction workshop, the teachers took over the program, learning and making adjustments as they went.

**Although the program has only been in place for 3 months, the school is already seeing early results, and is now working on expanding KnewSpace to other grade levels.**

**“Unless you see the program, it’s hard to understand how it works. It does work. We see benefits for both teachers and students—and the results are showing up in testing.”**

—  
Steven Sanchez  
Principal, Las Palmas School

**“Collaboration is a big thing.  
It’s allowed us to work together  
to design the right instruction.”**

—  
Maria Bravo-Hiesel  
2nd grade teacher, Las Palmas School

**“It helps the kids refocus because they know they are going to a new room. We have 5 different rotations—so it’s a new start every rotation.”**

—  
Carolyn Schelin  
2nd grade teacher, Las Palmas School

**“Imagine what it would be like if you only had 7 kids in front of you, and you only had to focus on them. That’s what it’s like.”**

—

Erika Valverde

2nd grade teacher, Las Palmas School

**We'd like to share a few final photos from the KnewSpace program at Las Palmas school.**

**Here are the kids hurrying—they aren't supposed to run—on their way to the next class period.**



**Here are students in small group instruction—paying close attention.**



# Here are students in independent study sessions— self-directed and on task.



# Here's the pilot team and students.



# Thank you, Las Palmas!

Dr. Haven and his team would like to thank:

- Principal Steven Sanchez

and 2nd grade teachers:

- Tricia Naval
  - Carolyn Schelin
  - Erika Valverde
  - and Maria Bravo-Hiesel
- of Las Palmas in National City  
for participating in the KnewSpace program.

We are grateful for your learning, comments, and feedback.

# Get Involved

---

# **We invite you to find out more about the KnewSpace program.**

Our mission is to improve teaching and learning by reimagining the traditional classroom.

Get in touch with us at [619.977.9339](tel:619.977.9339) or [hello@knewspace.com](mailto:hello@knewspace.com)

We can meet with you to discuss the opportunity for your school, or send you information about the program.

The KnewSpace program is supported by the Institute for Instructional Management, a 501c3 corporation located in Alpine, California.

# Appendix

---

# About the Institute for Instructional Management

Dr. Haven is the founder of the Institute for Instructional Management. A former superintendent, principal, university instructor, speaker, and consultant, Dr. Haven's deep background in education comes with a passion for education reform.

The mission of the institute is to improve teaching and learning by transforming traditional classrooms into new learning spaces.

The institute's pilot program, KnewSpace, reimagines the traditional classroom.

# KnewSpace pilot programs

## Creekside Early Learning Center

Alpine Union School District  
8818 Harbinson Canyon Road  
Alpine, CA 91901

Started in March, 2013

## Las Palmas School

National School District  
1900 East 18th Street  
National City, CA 91950

Started in September, 2013 (ongoing)